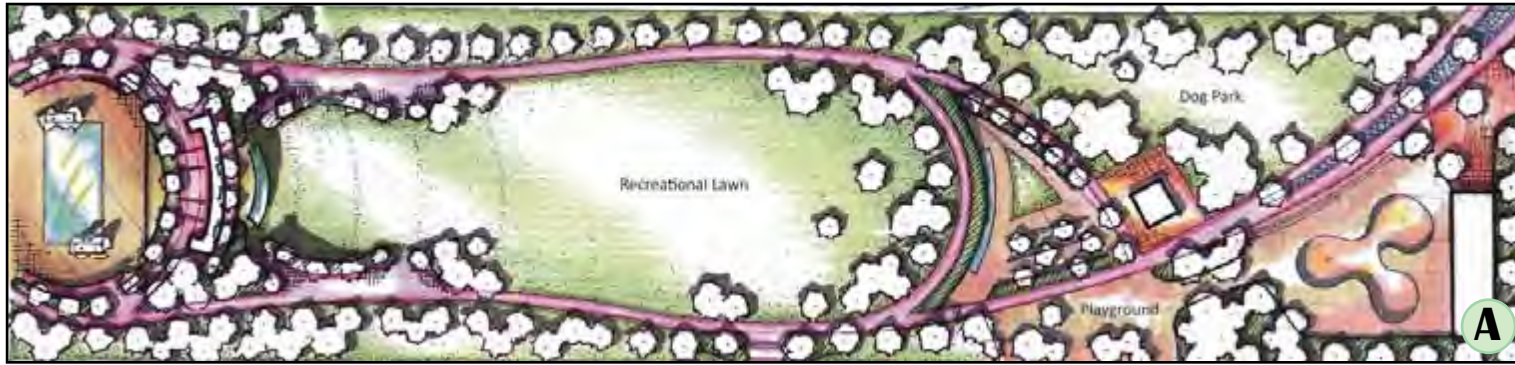
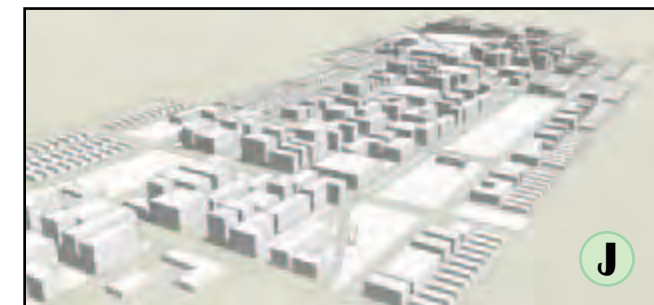
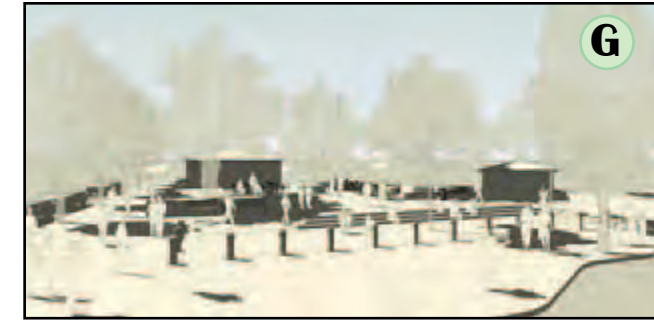
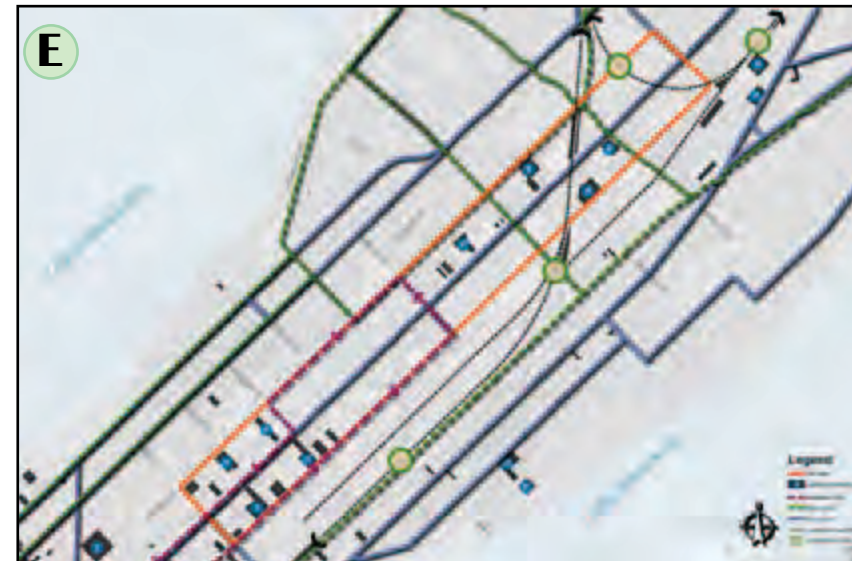


“Madison Capitol East District”

by: Christopher Gentile



The Dane County BUILD Advisory Committee identified a number of goals for the Madison Capitol East District: providing a balance of residential space, employment development, and office space, parking ease and accessibility and overall site design. Gentile's Master Plan emphasizes an improved streetscape and alternative transportation for this heavily traveled area. In Central Park, Gentile proposes a submerged stage, rooftop seating at an outdoor restaurant, a reflection pool, and living walls. A promenade, green house and skate park complete this community gathering place. In addition, the regional inter-city rail station—Yahara Station—will feature sustainable technologies, green roofs, and a new, lake-inspired design.



- (A) Central Park
- (B) Grand Stage
- (C) Main Entry Plaza
- (D) Land Use
- (E) Multimodal Transportation
- (F) Opportunity Analysis
- (G) Dickinson Plaza
- (H) Planting (Understory)
- (I) Proposed Redevelopment
- (J) Capitol East District Model

Gentile is currently employed at RVK Architects in San Antonio, Texas. He is always grateful for the direction and amazingly talented people he came to know at the UW-Madison. Gentile strongly believes Wisconsin's LA program is a hidden gem that produces professional graduates whose perspective of the environment is whole.

